

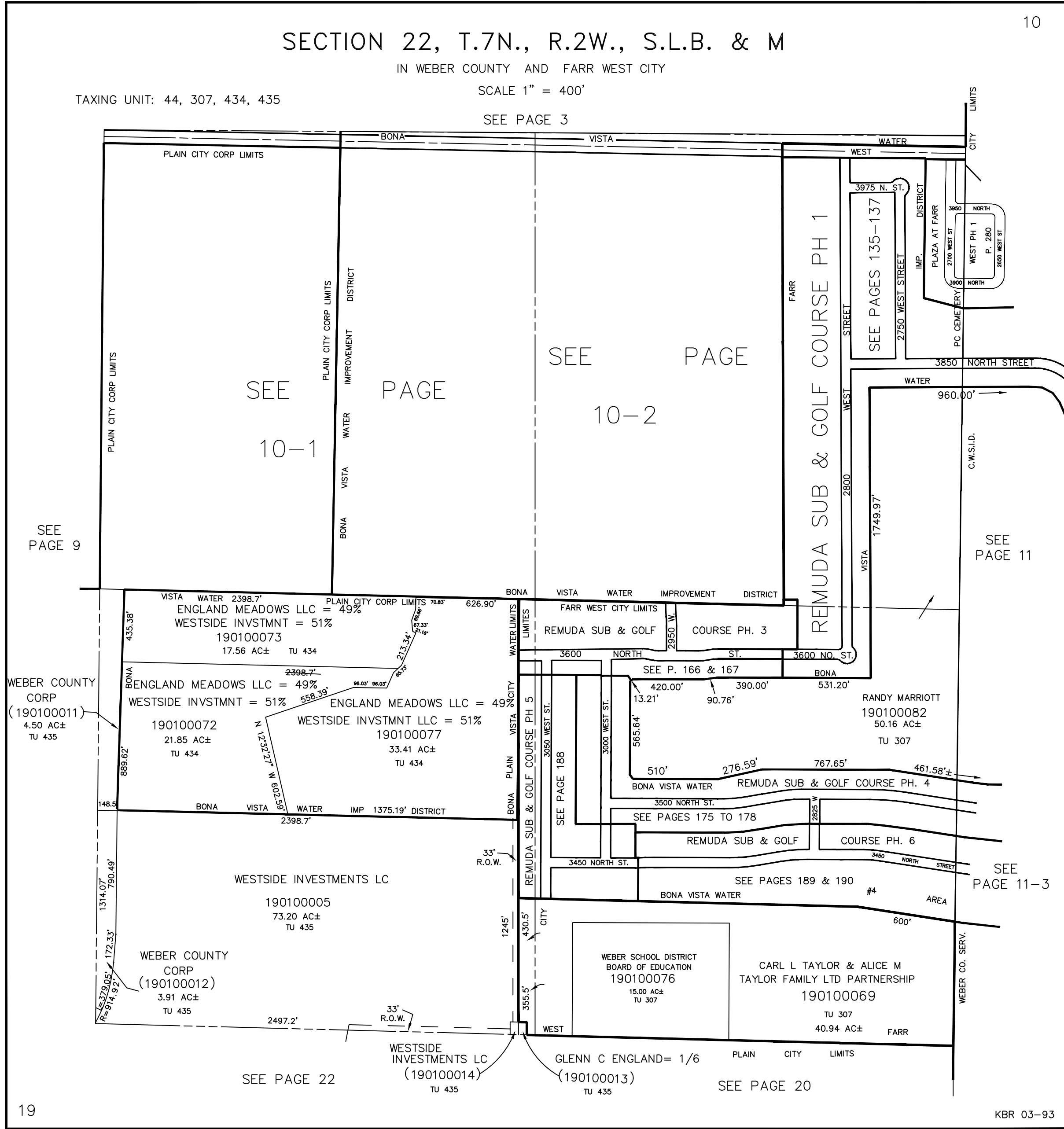
SECTION 22, T.7N., R.2W., S.L.B. & M

IN WEBER COUNTY AND FARR WEST CITY

TAXING UNIT: 44, 307, 434, 435

SCALE 1" = 400'

SEE PAGE 3



SEE PAGE 9

SEE PAGE 10-1

PAGE

SEE PAGE 10-2

SEE PAGE 11

SEE PAGE 11-3

SEE PAGE 22

SEE PAGE 20

WEBER COUNTY CORP (190100011) 4.50 AC± TU 435

ENGLAND MEADOWS LLC = 49% WESTSIDE INVSTMNT = 51% 190100073 17.56 AC± TU 434

ENGLAND MEADOWS LLC = 49% WESTSIDE INVSTMNT = 51% 190100072 21.85 AC± TU 434

ENGLAND MEADOWS LLC = 49% WESTSIDE INVSTMNT = 51% 190100077 33.41 AC± TU 434

WESTSIDE INVESTMENTS LC 190100005 73.20 AC± TU 435

WEBER COUNTY CORP (190100012) 3.91 AC± TU 435

WESTSIDE INVESTMENTS LC (190100014) 190100013 15.00 AC± TU 307

REMUDA SUB & GOLF COURSE PH. 3

REMUDA SUB & GOLF COURSE PH. 4

REMUDA SUB & GOLF COURSE PH. 5

REMUDA SUB & GOLF COURSE PH. 6

WEBER SCHOOL DISTRICT BOARD OF EDUCATION 190100076 15.00 AC± TU 307

CARL L TAYLOR & ALICE M TAYLOR FAMILY LTD PARTNERSHIP 190100069 40.94 AC± TU 307

RANDY MARRIOTT 190100082 50.16 AC± TU 307

SEE P. 166 & 167

SEE PAGES 175 TO 178

SEE PAGES 189 & 190

WEBER CO. SERV.

